



## **VOLVO EMERGENCY SERVICES VEHICLES**

Specification Information



---

## A PROUD SERVICE HERITAGE

---

The first Volvo rolled off its Gothenburg production line in 1927 and, by the early 1930s, Volvos were already the vehicle of choice for the Swedish Police. We've been supplying Emergency Response Vehicles in the UK for over 50 years now, and that experience gives us a deep understanding of emergency fleet demands.

Besides offering an impressive range of factory-built emergency specification models, we can also adapt our cars to fulfil specific requirements.

In short, exceptional people in exceptional circumstances deserve exceptional cars. And Volvo is proud to deliver.



---

## OUR EMERGENCY RESPONSE VEHICLES

---

Our range comprises fully factory-fitted Emergency Services versions of our V60, V70 and XC70 models. The V60 is a popular mid-range estate car, the V70 a luxury estate and the XC70 a luxury estate with all-terrain capability. Emergency Services models have bespoke chassis, wheels and brakes to maintain optimum performance even with increased payloads.

But that's not all. Along with the pioneering safety innovations and meticulous attention to detail you'd expect from Volvo, the vehicles feature reinforced 17" alloy wheels with five spokes for greater ventilation and durability, as well as robust 17.5" brakes designed for more intense driving.

These cars are as comfortable in a race to save lives as they are in everyday driving situations.



# V 6 0

## STANDARD:

- UK delivery charge
- Extended warranty - 3 years/150,000 miles
- 3-year Blue Light Roadside Assistance Cover
- Free unlimited access to Volvo Technical Hotline
- Free familiarisation training with new models

V60 ENGINES VARIANTS	GEARBOX	FUEL	CO <sub>2</sub> (G/KM)
T5 (253 hp) FWD	8 Speed Geartronic	Petrol	149
T5 (245 hp) FWD	8 Speed Geartronic	Petrol	149
D5 (233 hp) FWD	8 Speed Geartronic	Diesel	125
D5 (225 hp) FWD	8 Speed Geartronic	Diesel	125
D3 (150 hp) FWD	6 Speed Manual & 8 Speed Geartronic	Diesel	105 / 111



# V70

## STANDARD:

- UK delivery charge
- Extended warranty - 3 years/150,000 miles
- 3-year Blue Light Roadside Assistance Cover
- Free unlimited access to Volvo Technical Hotline
- Free familiarisation training with new models

V70 ENGINE VARIANTS	GEARBOX	FUEL	CO <sub>2</sub> (G/KM)
T5 (253 hp) FWD	8 Speed Geartronic	Petrol	156
T5 (245 hp) FWD	8 Speed Geartronic	Petrol	156
D4 (200 hp) FWD	8 Speed Geartronic	Diesel	122
D4 (220 hp) AWD	8 Speed Geartronic	Diesel	156
D4 (181 hp) FWD	8 Speed Geartronic	Diesel	122
D4 (181 hp) AWD	8 Speed Geartronic	Diesel	156
D3 (150 hp) FWD	6 Speed Manual & Geartronic	Diesel	113 / 118



# XC70

**STANDARD:**

- UK delivery charge
- Extended warranty - 3 years/150,000 miles
- 3-year Blue Light Roadside Assistance Cover
- Free unlimited access to Volvo Technical Hotline
- Free familiarisation training with new models

XC70 ENGINE VARIANTS	GEARBOX	FUEL	CO <sub>2</sub> (G/KM)
D5 (230 hp) AWD	6 Speed Geartronic	Diesel	153
D5 (220 hp) AWD	6 Speed Geartronic	Diesel	153
D4 (200 hp) FWD	6 Speed Manual & 8 Speed Geartronic	Diesel	137 / 153
D4 (215 hp) AWD	6 Speed Manual & 8 Speed Geartronic	Diesel	137 / 153
D4 (200 hp) FWD	6 Speed Manual & 8 Speed Geartronic	Diesel	115 / 127
D4 (181 hp) FWD	6 Speed Manual & 8 Speed Geartronic	Diesel	115 / 127

---

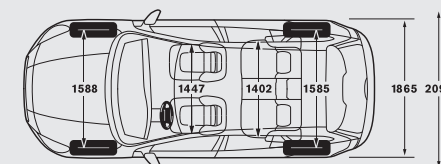
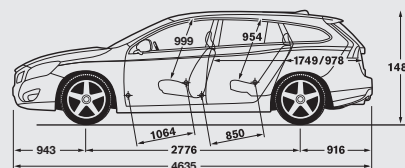
# TECHNICAL SPECIFICATION

---

## V60



WEIGHTS AND CO <sub>2</sub>				
V60 Models	D3 Manual	D3 Auto	D5 Auto	T5 Auto
Max total weight (kg)	2310	2310	2310	2310
Max load front axle (kg)	1250	1250	1250	1250
Max load rear axle (kg)	1090	1090	1090	1090
Kerb weight (kg)	1643	1672	1677	1677
Payload* (kg)	667	638	633	633
CO <sub>2</sub> (g/km)	105	111	125	149
Emission level	Euro 6	Euro 6	Euro 6	Euro 6





# V70

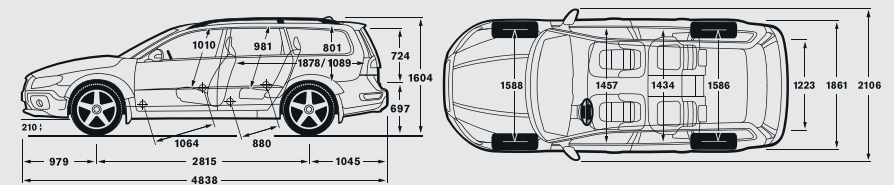
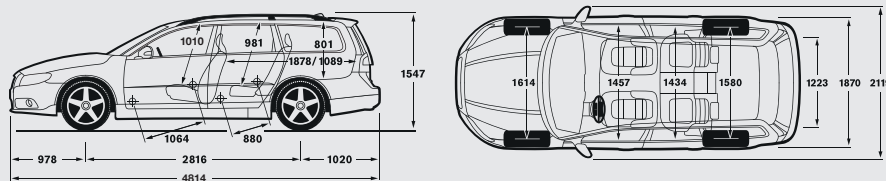


# XC70



WEIGHTS AND CO <sub>2</sub>					
V70 Models	D3 Manual	D3 Auto	D4 Auto	D4 AWD Auto	T5 Auto
Max total weight (kg)	2650	2650	2650	2650	2650
Max load front axle (kg)	1290	1290	1290	1290	1290
Max load rear axle (kg)	1370	1370	1370	1370	1370
Kerb weight (kg)	1730	1753	1753	1740	1740
Payload* (kg)	920	897	897	910	910
CO <sub>2</sub> (g/km)	113	118	122	156	156
Emission level	Euro 6	Euro 6	Euro 6	Euro 6	Euro 6

WEIGHTS AND CO <sub>2</sub>			
XC70 Models	D4 Manual	D4 AWD Auto	D5 AWD Auto
Max total weight (kg)	2650	2650	2650
Max load front axle (kg)	1290	1290	1290
Max load rear axle (kg)	1400	1400	1400
Kerb weight (kg)	1857	1876	1876
Payload* (kg)	793	774	774
CO <sub>2</sub> (g/km)	115	153	153
Emission level	Euro 6	Euro 6	Euro 6



\* Please note that the payload provided is calculated on actual kerb weight of the Emergency Specification models (with full fluids). Many manufacturers calculate payload based on minimum kerb weight which increases the result but is less accurate. Please contact us for details of minimum kerb weight if required.



---

# LIFESAVING FEATURES AS STANDARD

---

Volvo's mission has always been to keep people safe. Since we introduced the three-point safety belt to the world in 1959, it's estimated that over one million lives have been saved.

We continue to pioneer safety features and every day strive towards achieving the following vision: That no one will be seriously injured or killed in a new Volvo by 2020.



#### **Seat belts**

We invented the three-point seatbelt in 1959 and, in the interest of safety, made the design patent available to other car manufacturers for free. Now, our seatbelts automatically tighten within a few thousandths of a second after a collision.

#### **City Safety**

City Safety lends a hand when traffic comes to a sudden halt, preparing the brakes for a quicker response or automatically braking if there is no time to respond.

#### **Adaptive cruising**

Adaptive Cruise Control makes sure your car keeps its distance to the car in front. It makes driving a lot more relaxing especially in slow-moving city traffic.

#### **Active High Beam**

In darkness, Active High Beam automatically senses other vehicles, pedestrians and cyclists and temporarily dims your beam.

#### **Blind Spot Information System (BLIS)**

With radar sensors that alert you to surrounding cars, you can change lane with complete awareness.

#### **Lane Keeping Aid**

If your car starts to veer out of its lane, our Lane Keeping Aid kicks in, gently steering you back and sending warning vibrations to keep you alert.

#### **Pedestrian Detection**

This helps you avoid accidents by detecting people near your vehicle. It even brakes for you should the situation demand.

#### **Forward Collision Warning**

Forward Collision Warning scans all objects 150 metres or less in front of your car and, if an accident is imminent, it warns you and pre-charges the brakes for a quick stop.

#### **Stronger construction**

Made of super-strong boron steel and lighter steels, our safety cages hold strong during an accident, while allowing the energy to disperse to help keep you safe.

---

## EMERGENCY RESPONSE SPECIFICATION ADDITIONAL FEATURES

---

In addition to Volvo's impressive standard safety features, our factory-fitted Emergency Response Specification vehicles give you the following extras. These make the vehicles even more fit for purpose.



**17" reinforced alloy wheels**

Specially reinforced, these 5-spoke alloys also offer superior ventilation and cooling.

**17.5" brakes with wear sensor wires**

Volvo's largest brakes are specially designed for more intense driving. They feature a sensor on the dashboard to warn when the brake pads are wearing down.

**Additional full size 17" reinforced spare wheel** (not V60)

Designed so that you can quickly swap wheels if tyres are worn or punctured. Please note that this wheel does not fit the well in the car's cargo area and should be stored in your workshop.

**Fit for purpose tyres:**

- 225/50 R17 W Michelin Primacy – S80/V70
- 235/45 R17 W Pirelli – V60
- 235/55 R17 V Continental – XC70

**Tyre sealant kit and compressor**

Included as backup in the event of a puncture.

**Extra exterior door mirror on passenger side** (not V60)

For use by the observer in the passenger seat. The mirror can be removed for covert cars.

**Emergency Services chassis with Nivomat shock absorbers**

Designed to allow for an increased payload while retaining optimum speed, handling and comfort.

**Nivomat (automatic self-levelling suspension)**

Designed to balance out increased payloads in the rear cargo area and improve handling at speed.

**Steel safety net**

Reinforced to prevent heavy, loose items from entering the passenger area.

**Calibrated speedometer with +/- 2% accuracy and with 2 mph increments**

Prepared by Instrument Repair Service (IRS).

**Additional wiring and fuse box for Emergency Service equipment**

Prepared for the fitting of additional electronic equipment.

**Upholstery, Emergency Vehicle Interior Off Black** (not V60), **Textile/Tricotex Off Black available as an option**

Emergency Vehicle upholstery has a textile core with hardwearing leather-faced side panels. This gives greater comfort for longer shifts plus the durability to withstand quick demounting and prolonged contact with utility belts.

**Vinyl rear seat cover for upholstery protection**

One-piece bench seat, easily washable and with no cavities for the hiding of contraband by suspects.

**Rubber moulded floor mats**

Hardwearing and easy to clean.

**Heavy-duty battery** (70 ampere hours/760 cold cranking amps)

Larger capacity battery designed to cope with additional electronic equipment.

**180 amp alternator****70-litre fuel tank**

Increased capacity for longer patrol time.

**Service intervals set to 12,000 miles/12 months/650 engine hours**

Although 18,000 miles is the manufacturer recommended figure, in our experience customers tend to service at 9,000 – 12,000 mile intervals. We have therefore set the service interval at 12,000 miles for emergency use. Intervals can be altered to meet individual fleet requirements.

**Optional European Type Approval Certificate of Conformity**

Required when purchasing an Emergency Services Specification Vehicle to be registered as a diesel car (e.g. in the case of a covert vehicle).

**Free familiarisation training**

We offer free familiarisation training for drivers and technicians taking on new Volvo models.

STANDARD FEATURES	V60	V70	XC70
<b>Safety &amp; Security</b>			
City Safety	•	•	•
Dual stage driver and passenger airbags	•	•	•
PACOS (Passenger Airbag Cut Off Switch)	•	•	•
SIPS (Side Impact Protection System)	•	•	•
WHIPS (Whiplash Protection System) (front seats)	•	•	•
Inflatable Curtain	•	•	•
Dual chamber SIPS airbags	•	•	•
ABS (Antilock Brake System) with EBA (Emergency Brake Assist)	•	•	•
5 three-point seatbelts with pre-tensioners (front and rear)	•	•	•
DSTC (Dynamic Stability and Traction Control)	•	•	•
IDIS (Intelligent Driver Information System)	•	•	•
Steel safety net	•	•	•
Fixed head restraints (all 5 seats)		•	•
Manually foldable rear headrests	•		
ISOFIX attachment (rear seats)	•	•	•
Seatbelt detection (all seats)	•		
Advanced Stability Control	•		
Anti-theft alarm including immobiliser, volume sensor and level sensor (Thatcham category 1)	•	•	•
Key-integrated remote central locking including fuel flap with deadlocking system and auto open/close	•	•	•
Internal door lock button & diode (all doors)	•	•	•
Laminated front windscreen & tempered side windows	•	•	•
Headlight levelling system		•	•
Adaptive brake lights including high level LED brake lights	•	•	•
Side marker illumination	•	•	•
Home safe and approach lighting	•	•	•
Power parking brake (drive away release)	•	•	•
First aid kit	•	•	•
Warning triangle	•	•	•
<b>Exterior</b>			
Unique Emergency Services chassis	•	•	•
17" reinforced alloy wheels	•	•	•
Spare full size 17" reinforced alloy wheel (does not fit wheel well in cargo area)		•	•
17.5" brakes with wear sensor wires	•	•	•
235/45 R17 W Pirelli tyres	•		

225/50 R17 W Michelin Primacy tyres		•	
235/55 R17 V Continental tyres			•
Tyre sealant kit and compressor	•	•	•
Jack and wheel brace	•	•	•
Heavy-duty anti-roll bars and shock absorbers	•	•	•
Twin exhaust	•	•	•
Nivomat (automatic self-levelling suspension)	•	•	•
Extra exterior door mirror on passenger side (can be removed for covert cars)		•	•
Heated windscreen washer nozzles		•	•
Power adjustable heated door mirrors	•	•	•
Front and rear fog lights	•	•	•
<b>Interior</b>			
Electronic Climate Control with AQS (Air Quality System)	•	•	•
B-Pillar ventilation	•	•	•
Versatile split-folding rear seat (40/20/40)		•	
12v sockets (rear tunnel console/cargo area)	•	•	•
Additional wiring and fuse box for Emergency Service equipment	•	•	•
IRS calibrated speedo with 2 mph increment dial fascia	•	•	•
Cruise control	•	•	•
Information Centre	•	•	•
5" colour display screen	•	•	•
Auto dimming rear view mirror	•	•	•
Height and reach adjustable steering column	•	•	•
Steering wheel remote audio controls	•	•	•
Height adjustable driver and passenger seats with lumbar support	•	•	•
Centre armrest blanking plate	•	•	•
Chrome rotary knobs	•	•	•
Rubber moulded floor mats (set of 4)	•	•	•
Leather steering wheel and gear knob	•	•	•
Feather line aluminium trim	•	•	•
EA00 Unique Emergency Vehicle Interior Off Black or E501Textile/Tricotech Off Black		•	•
Front and rear reading lights	•	•	•
Cup holders (not fitted, item provided in luggage compartment for own installation if required)	•	•	•

Illuminated driver and passenger vanity mirrors	•	•	•
DAB (Digital Audio Broadcasting) radio	•	•	•
Bluetooth® handsfree system	•	•	•
Electrically heated rear window	•	•	•
Owner's manual	•	•	•
Emergency Specification supplementary manual (shows location of wiring for equipment, etc.)	•	•	•
Sensus Connect with High Performance Sound: - Access to a range of selected web apps and internet browser - Connected Service Booking - Voice activated control - 7" colour display screen - 1 x radio/CD/DVD - Hard disc drive for music storage - 4 x 45W amplifier with 8 speakers - 1 x USB/1 x Aux. Input			•
Sensus Navigation: - European mapping - TMC (Traffic Message Channel) - Lifetime annual map updates			•
Rear Park Assist			•
<b>Transmission</b>			
6-Speed manual	•	•	•
6-Speed geartronic	•	•	•
<b>Engine Installation</b>			
Start/Stop engine with battery monitoring system (manual only)	•	•	•
Heavy-duty battery (70 ampere hours/760 cold cranking amps)	•	•	•
Alternator 180 amps	•	•	•
70-litre fuel tank	•	•	•
Euro 6 Emission Standard	•	•	•
Service interval set to 12,000 miles/12 months/650 engine hours	•	•	•

FACTORY OPTIONS	25% DISCOUNTED PRICE + VAT	V60	V70	XC70
<b>Safety &amp; Security</b>				
BLIS (Blind Spot Information System) (must be combined with autofolding power door mirrors with ground lights)	£312.50	•	•	•
PCC (Personal Car Communicator) and Keyless Drive	£343.75	•	•	•
Laminated windows including cargo area (includes water repellent front side windows)	£312.50	•	•	•
Dark tinted rear windows (rear side doors and cargo area)	£218.75	•	•	•
Lane Departure Warning (LDW) with Driver Alert Control (DAC), Active High Beam and Roadside Information Display	£406.25	•	•	•
Power operated child locks	£53.12	•	•	•
Luggage protection net	£162.50		•	•
Load cover	No cost option		•	•
<b>Exterior</b>				
Solid paint – Black Stone (all other Solid colours FOC)	£218.75	•	•	•
Metallic paint	£400.00	•	•	•
Inscription™ paint	£531.25	•	•	•
Tempa spare wheel	£93.75		•	•
Autofolding power door mirrors with ground lights	£140.62	•	•	•
Active Bending Headlamps with Headlamp Cleaning System	£521.27		•	•
Power operated tailgate	£250.00		•	
Rear park assist	£203.12			•
Front and rear park assist	£406.25	•	•	•
Roof rails	No cost option		•	•
Rain sensor – automatic windscreen wiper activation	£96.88	•	•	•
Rear park assist camera	£234.38	•		
Extra key set	£100.00		•	•
Tow bar (fixed or removable – dealer fit accessory)	Quotation upon request		•	•
European Type Approval Certificate of Conformity (required when purchasing Emergency Services Specification vehicle to be registered as diesel car e.g. covert vehicle)	No cost option		•	•
<b>Interior</b>				
Heated front seats	£187.50		•	•
Heated rear seats (must be combined with heated front seats)	£178.12	• (£125)	•	•
Leather upholstery	£845.00	•	•	•
Police upholstery (leather/textile front seats and washable vinyl rear seat with no external stitching)	No cost option	• (£843.25)	•	•

Rear centre armrest with cupholders (not available with police upholstery)	No cost option		•	•
Power driver seat with memory for seat and exterior mirrors (must order with autofolding power door mirrors with ground lights)	£375.00	•		
Power passenger seat (must order with power driver seat)	£250.00	•		
Heated steering wheel	£158.33	•		
Power glass tilt & slide sun roof	£531.25	•		
Digital combi instrument	£218.75	•		
Power glass tilt & slide sun roof	£531.25	•		
Digital combi instrument	£218.75	•		
<b>Option Packs</b>				
Winter Pack				
• Heated front seats • Headlight cleaning system • Heated front windscreen (must be ordered with rain sensor)	£312.50	•	•	•
Winter Pack with Active Bending Headlamps				
• Heated front seats • Headlight cleaning system • Active Bending Xenon Headlamps • Heated front windscreen (must be ordered with rain sensor)	£687.50		•	•
Driver Support Pack				
• Collision Warning with Full Auto Brake • Pedestrian and cyclist detection • ACC (Adaptive Cruise Control) and Distance Alert • Queue Assist (geartronic only) • LDW (Lane Departure Warning) with DAC (Driver Alert Control) including Active High Beam and Road Sign Information Display • BLIS (Blind Spot Information System) (must be ordered in conjunction with rain sensor, autofolding power door mirrors with ground lights and active TFT crystal driver's display)	£1,187.50	•	•	•
<b>Special Vehicle Retro-fit Options</b>				
Auxiliary battery and split charge	£495.00	•	•	•
Run lock	£400.00	•	•	•




---

# COLOURS

---

## SOLID



019  
Black Stone  
Additional cost  
£206.25

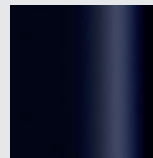


614  
Ice White



612  
Passion Red  
Not available on XC70

## METALLIC



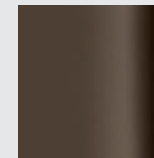
467  
Magic Blue



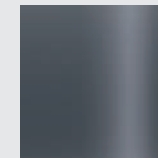
484  
Seashell



492  
Savile Grey  
Not available on XC70



700  
Twilight Bronze



714  
Osmium Grey  
Not available on V70  
and XC70

## PREMIUM METALLIC



477  
Electric Silver



487  
Ember Black



707  
Crystal White  
Not available on V70  
and XC70



702  
Flamenco Red  
Not available on V70  
and XC70



711  
Bright Silver



712  
Rich Java  
Not available on V70



713  
Power Blue  
Not available on V70  
and XC70



717  
Onyx Black






---

## UPHOLSTERY

---

UPHOLSTERY	V60
K001 – Textile/Tricotech Off Black Textile	No cost option
K701 – Leather Faced (Off Black)	£845.00
UPHOLSTERY	V70
E501 – Textile/Tricotech Off Black Textile	No cost option
EA01 – Unique Police Interior Leather/Textile Front Seat, Vinyl Backseat (wipeable)	No cost option
E101 – Leather (Off Black)	£845.00
UPHOLSTERY	XC70
F501 – Textile/Tricotech Off Black Textile	No cost option
FA01 – Unique Police Interior Leather/Textile Front Seat, Vinyl Backseat (wipeable)	No cost option
F101 – Leather (Off Black)	£845.00

---

# TURNKEY VARIANTS FITTED TO YOUR REQUIREMENTS

---

Our Emergency Specification vehicles are all factory-fitted with tougher chassis, reinforced alloy wheels, bigger brakes and hardwearing upholstery. If you wish, you can take the specification even further and order a 'turnkey variant'. As the name suggests, these cars are fitted out to your precise requirements and ready to drive.

You can see examples of turnkey variants in the table opposite. Besides giving you a vehicle ideally suited to your needs, there are a number of other advantages to purchasing a turnkey variant from Volvo.

- One-stop ordering means you don't have to liaise with a number of parties.
- The Volvo warranty includes all fitted parts.
- Should there be a problem, you know it will be resolved by Volvo. If a third party converter is involved, there may be an issue over responsibility.
- All vehicles will have passed the Metropolitan Brake and Home Office EMC Spec 6 Test.

ROLE	FEATURES
Roads Policing	Marked or unmarked cars, with cameras and speed detection equipment installed and bespoke load carrier.
Models/engines recommended: V60 D5/T5, V70 T5	
Armed Response	Fully equipped with various Gunbox designs to meet individual force requirements and space for up to 5 officers.
Models/engines recommended: XC70 D5, XC90 D5	
Intermediate/Area Car	Hatchback, Estate or Saloon to meet lower power performance requirements.
Models/engines recommended: V40 D3/D4/T3, V60 D4/T3, S60 D4/T3, S80 D4	
Covert/Surveillance	Specialist cars that blend in but deliver performance when required, with covert lights and siren.
Models/engines recommended: V40 D4/T5, V60 T5, V70 T5	
Dog Cars	Proven factory-built design for twin dog cage on a Large Estate platform.
Models/engines recommended: V70 D3/D4/D4 AWD, XC70 D5 AWD	
Ambulance RRV	Response capable vehicles with large payload area, equipped to deal with Response or Patient Transfer situations.
Models/engines recommended: V70 D3/D4/D4 AWD, V60 D3/D4, V60 Cross Country, XC70 D4/D4 AWD/D5 AWD	
Fire Officer Car	Flexible and versatile models to suit on/off road and payload carrying requirements.
Models/engines recommended: V60 D3/D4/D5, V60 Cross Country, S60 Cross Country, V70 D3 /D4/ D4 AWD, XC60 D4/D4 AWD/D5 AWD, XC70 D4/D4 AWD/D5 AWD	
Airport/Port/Security Patrol/Highways and Rescue	A choice of large capable models, designed and equipped to meet the individual role requirement.
Models/engines recommended: V60 Cross Country, S60 Cross Country, V70 D4 AWD, XC60 D4/D4 AWD/D5 AWD, XC70 D4/D4 AWD/D5 AWD	



# STANDARD SHOWROOM MODELS

For use in covert surveillance and as Senior Officer company cars, Volvo are pleased to offer a range of unmarked vehicles. All cars can be modified to your requirements.



## V40

V40
ENGINE
T2 (122 hp)
T3 (152 hp)
T5 (245 hp)
D2 (120 hp)
D3 (150 hp)
D4 (190 hp)

This hatchback received the top rating of five stars in the Euro NCAP collision test and its overall result is the best ever recorded by the institute.

## S60

## V60



Our premium sports saloon is comfortable and spacious and comes with City Safety as standard. The V60 offers the comfort and performance of the S60 with the added space of a five-door estate.

S60/V60
ENGINE
T3 (152 hp)
D2 (120 hp)
D3 (150 hp)
D4 (190 hp)
D4 AWD (190 hp)

## V60 TWIN ENGINE



Featuring pioneering technology, this is the world's first Diesel Plug-In hybrid and gives fuel efficiency of up to 155 mpg with CO2 emissions as low as 48g/km.

V60 TWIN ENGINE
ENGINE
D6 Twin Engine (220 + 68 hp)

# XC90



XC90
ENGINE
D5 AWD (225 hp)
T6 AWD (320 hp)
T8 Twin Engine (320 + 87 hp)

The all-new XC90 is our flagship car. It combines pure, uncluttered luxury with advanced safety and comfort for all seven passengers.

# V70



# S80



# XC70



V70/S80/XC70
ENGINE
D3 (150 hp) (V70 only)
D4 (181 hp)
D4 AWD (181 hp) (XC70 only)
D5 AWD (220 hp) (XC70 only)

The S80 is a high-performance luxury saloon. Meanwhile, the V70 is a luxury estate car that combines power, elegance and safety, and the XC70 adds all-road capability to the V70 package.

# XC60



XC60
ENGINE
D4 (190 hp)
D4 AWD (190 hp)
D5 AWD (220 hp)

The XC60 combines the practicality of a premium family SUV with the style of a sporty estate car.



---

# VOLVO EMERGENCY SERVICES VEHICLES

TAKE THE WHEEL

---

For more information about how the Volvo Emergency Service vehicles range could benefit your fleet or to request a quotation or test drive, please contact as below:

**Office**

Email: [vcuksv@volvocars.com](mailto:vcuksv@volvocars.com)

Tel: 01628 422214

Web: [volvocars.co.uk/emergencyvehicles](http://volvocars.co.uk/emergencyvehicles)

Volvo Cars UK  
Scandinavia House  
Norreys Drive  
Maidenhead  
Berkshire  
SL6 4FL

**Special Vehicles Manager**

Ian Reger

Email: [ian.reger@volvocars.com](mailto:ian.reger@volvocars.com)

Tel: 07889 428222

NB Information correct at time of going to print. Some of the equipment described or shown may now be available only at extra cost. Before ordering, please ask your Volvo Emergency Service vehicles contact for the latest information. The manufacturer reserves the right to make changes at any time, without notice, to prices, colour, materials, specifications and models. Volvo Car UK Limited, Scandinavia House, Norreys Drive, Maidenhead SL6 4FL. MPG figures are obtained from laboratory testing for comparisons between vehicles and may not reflect real driving results.



**V O L V O**